

Transportation is Growth



Shawn D. Wilson, Ph.D.

Secretary

 **@onevisionary**

November 29, 2022

Today's Discussion

- Accomplishments & Forecast
- Mega Projects
- Local Projects
- Questions

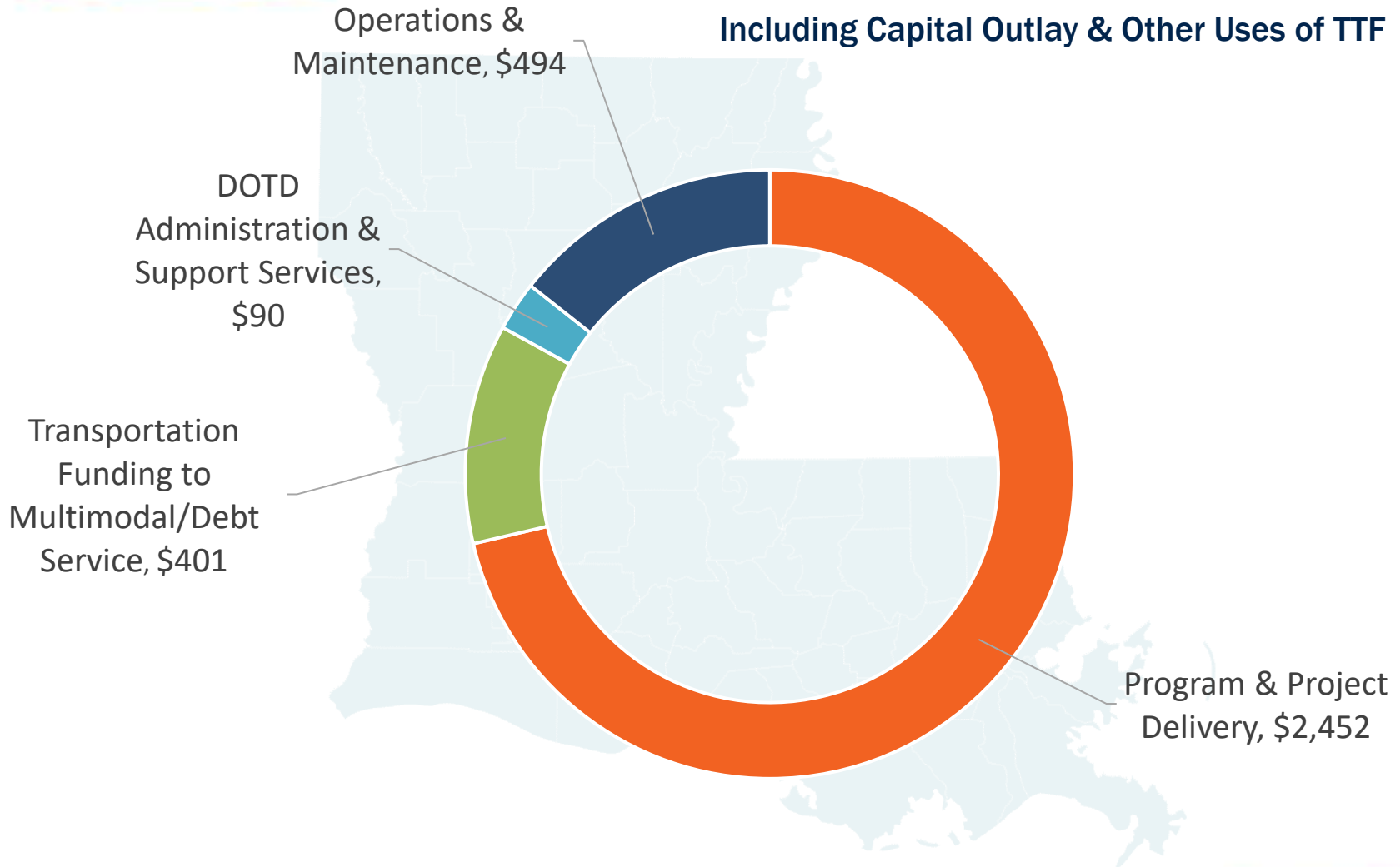


Accomplishments & Forecast

- Since 2016 DOTD has awarded:
 - 2,000 projects worth more than **\$5.2 Billion Statewide**
 - Over 6,800 Miles of projects
- Over the next 12 months, DOTD is planning to award **470+ projects** with a construction value of nearly **3.6 Billion** across the state.
- In East Baton Rouge Parish DOTD is planning to let over **\$53 Million** in projects **over the next 12 months.**

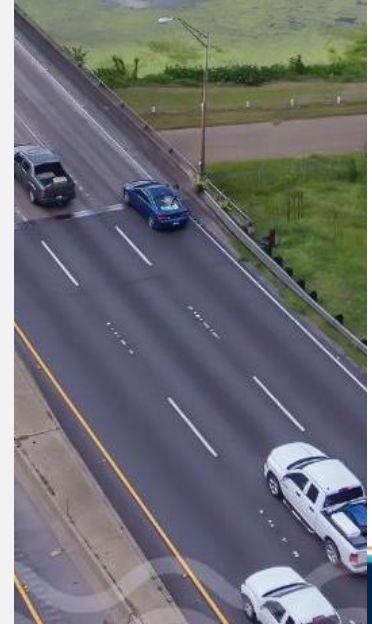
FY 23 \$3.4B Executive Budget

Including Capital Outlay & Other Uses of TTF

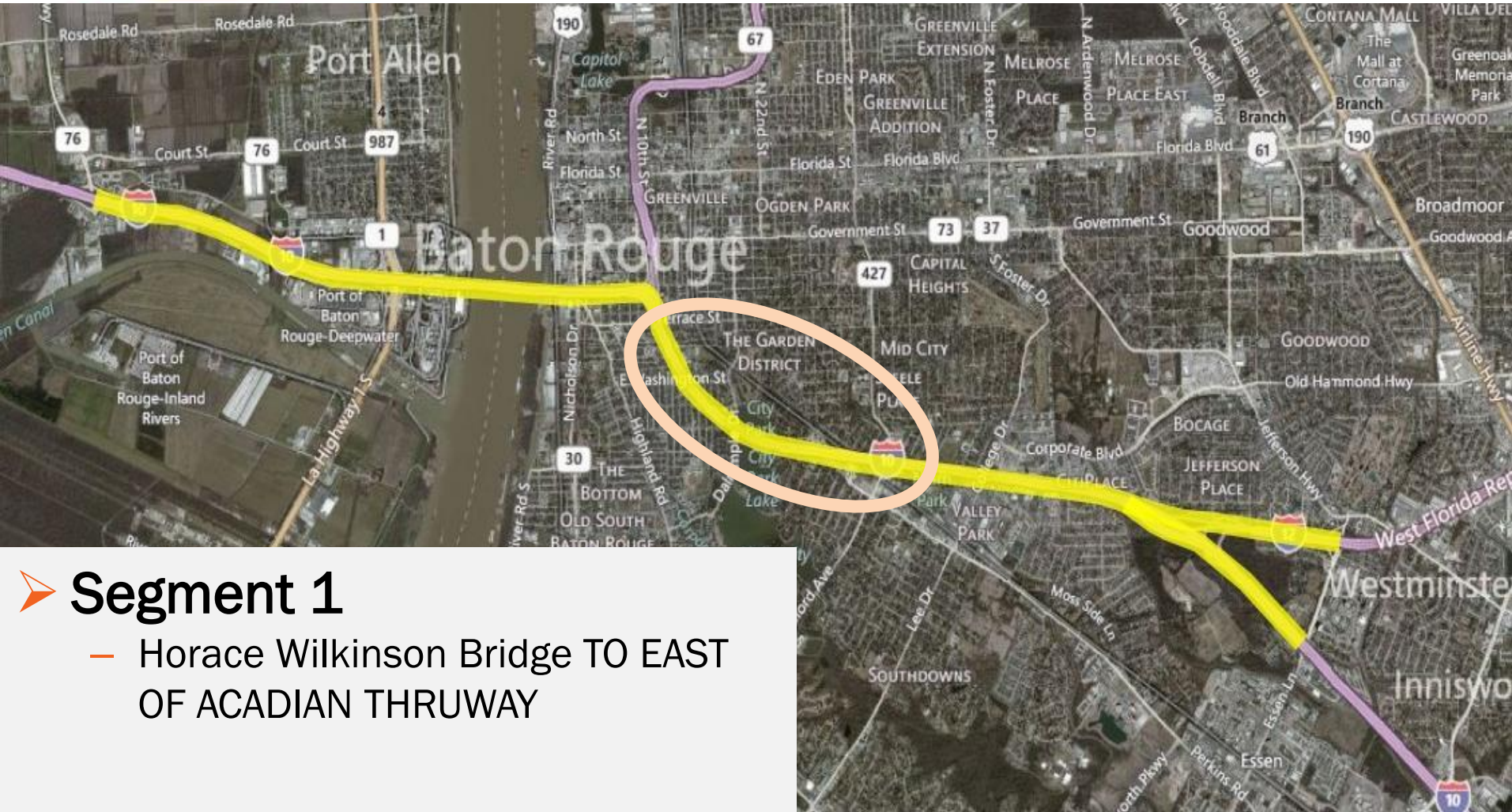


Capital Area Mega Projects

I-10 WIDENING CMAR



- I-10 EB no longer drops to 1 lane
- 4 lanes now carried throughout the corridor, providing more capacity
- Short on-ramps are now longer, allowing appropriate distance for merging
- Wider shoulders improving safety



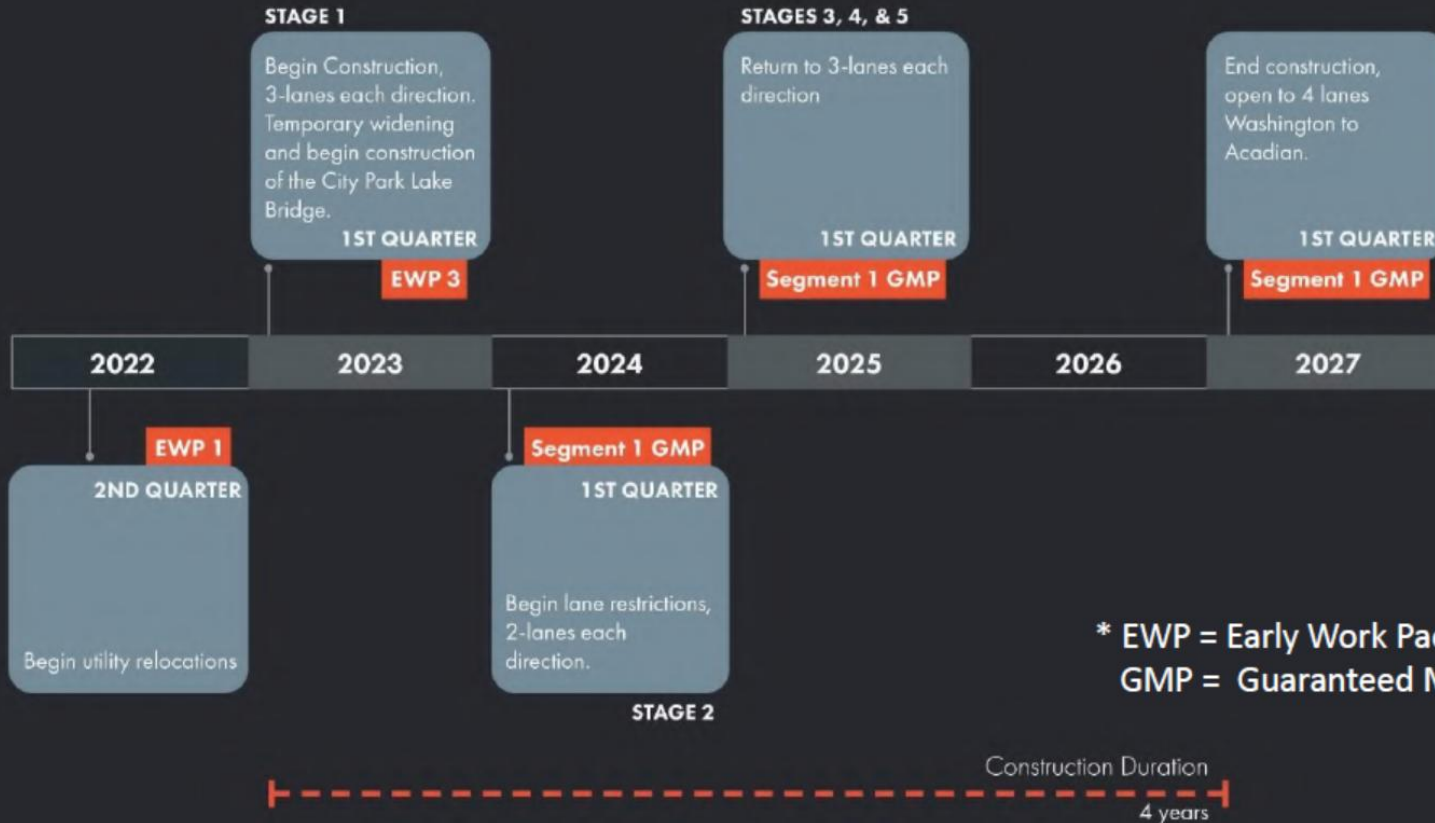
➤ **Segment 1**
— Horace Wilkinson Bridge TO EAST OF ACADIAN THRUWAY



Acadian Thruway

Google Earth
Landsat, Copernicus, Data SIO, NOAA

CONSTRUCTION PHASE TIMELINE



* EWP = Early Work Package
GMP = Guaranteed Maximum Price

Other Project Information

➤ Video

- <https://i10br.com/know-the-facts-about-the-i-10-widening-project-through-baton-rouge/>

➤ Web site:

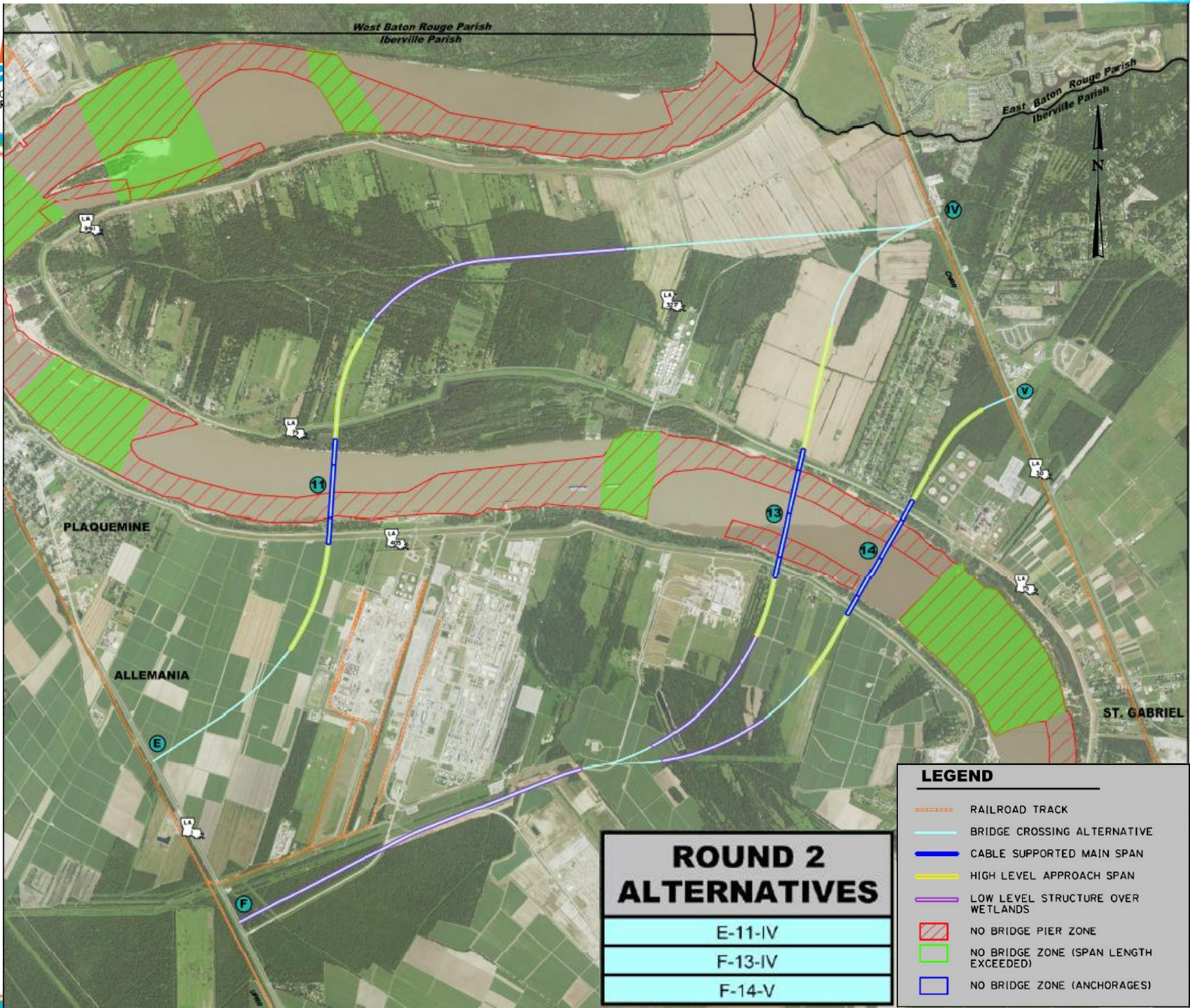
- <https://i10br.com/>

➤ Timeline:

- <https://i10br.com/project-info/>

New MRB Project

- Ultimate objective is to construct a new crossing of the Mississippi River in the Greater Baton Rouge Area
- Part I: Enhanced Planning Study
(July 2020 – Summer 2022)
- Part II: Environmental Evaluation
(Summer/Fall 2022 – Summer 2024)



West Baton Rouge Parish
Iberville Parish

East Baton Rouge Parish
Iberville Parish

PLAQUEMINE

ALLEMANIA

ST. GABRIEL

ROUND 2 ALTERNATIVES

E-11-IV
F-13-IV
F-14-V

LEGEND

- RAILROAD TRACK
- BRIDGE CROSSING ALTERNATIVE
- CABLE SUPPORTED MAIN SPAN
- HIGH LEVEL APPROACH SPAN
- LOW LEVEL STRUCTURE OVER WETLANDS
- / / / / NO BRIDGE PIER ZONE
- NO BRIDGE ZONE (SPAN LENGTH EXCEEDED)
- NO BRIDGE ZONE (ANCHORAGES)

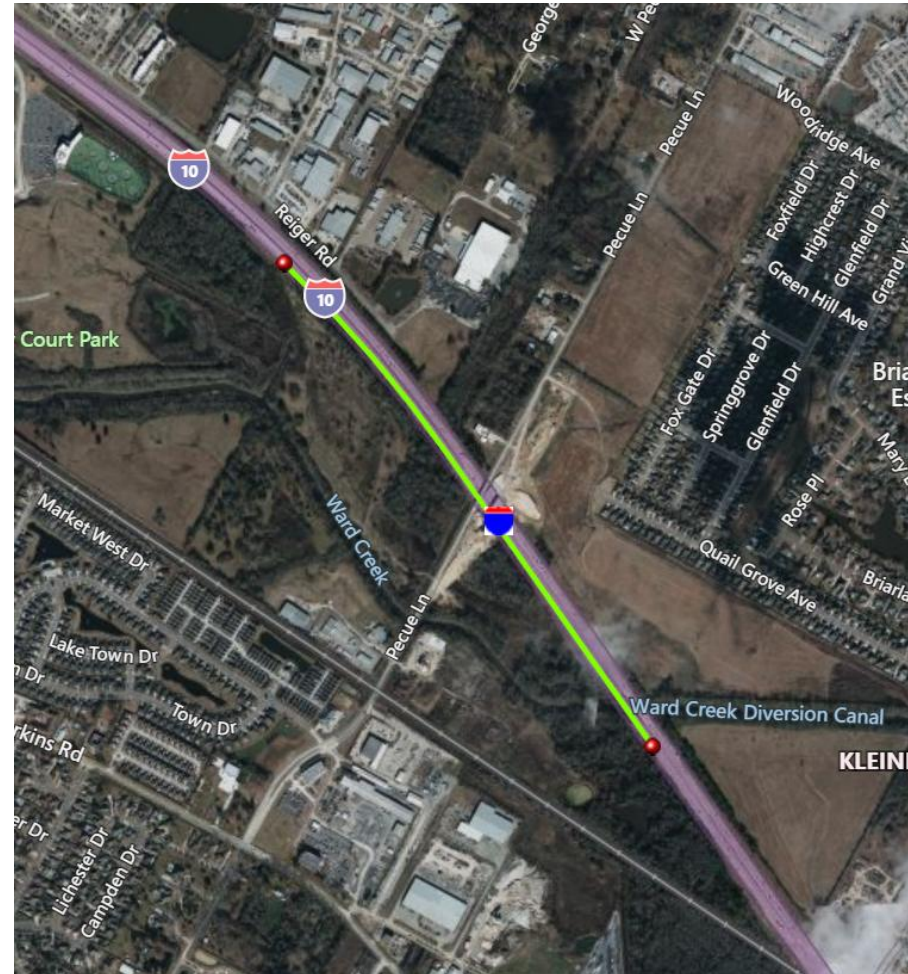
Lessons Learned

- Approximately **80%** of Greater Baton Rouge Traffic is made up of **local drivers**
- Local Drivers Use I-10 like a Surface Street
- **Truck Traffic** comprises only about **15%** of daily traffic on the I-10 Horace Wilkinson Bridge
- Out of 63,000+ vehicles crossing the I-10 MRB in the East Bound direction:
 - ~62% of the Volume comes from LA 1 and LA 415
 - 4,517 are I-10 Through Traffic
 - 8,185 are I-12 Through Traffic

Other Local Projects

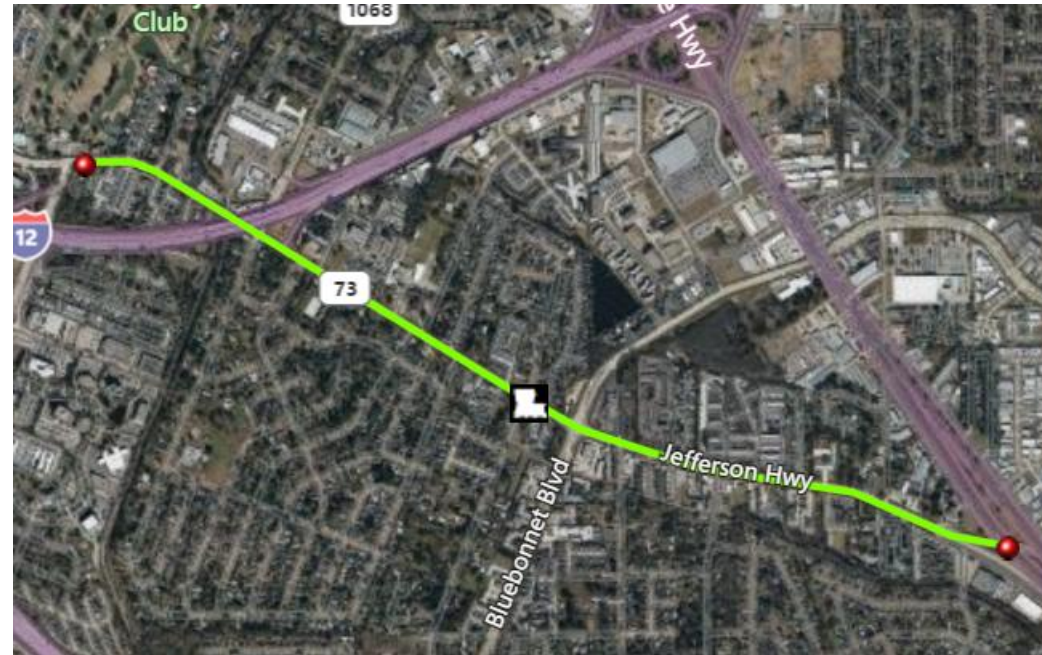
Pecue Lane Phase 3

- **\$75M** construction estimate
 - November 23'
- Completion of Diverging diamond interchange I10 @ Pecue
- Widen Pecue from 2 to 4 lanes, and reconstruction of side streets along I-10



LA 73 Rehab

- **\$10-15M** construction estimate
 - Jan 23'
- Full Depth Paving
 - Replace concrete gutter
 - Replace sidewalks
- 2.16 miles of construction





Over **\$190M** in Ongoing Construction

Questions?