

2021 Good Growth Awards Gala

The Greatest Generation
Silent Generation
Baby Boomers

Generation X
Millennials
Gamers

BRIDGING  **THE GAP**

AWARD ENTRIES



Good Growth Awards

Thursday, October 28th

6:00pm – 9:00pm

Renaissance Hotel Baton Rouge





Mission and Purpose of Good Growth Awards

The Growth Coalition seeks to inform and equip its members and the community of best practices in development by highlighting projects that “raise the bar” in the Baton Rouge and the surrounding areas. Developers play a vital role in the health of our economy. These awards offer a platform to promote well calculated risk and thoughtful practices while rewarding participants and encouraging all to be thoughtful and innovative.



Special Thanks to Our

Award Selection Committee

Larry Bankston
Executive Director Growth Coalition
Herb Gomez, *Government Relations,*
Greater Baton Rouge Association of Realtors®

Award Gala Committee

Larry Bankston, Glenn Bohan, Justin Langlois, Jonann Stutzman, Jill Sylvest, and Jonathan Walker

Centerpiece Sponsor

NAI Latter & Blum



Growth Coalition Board of Directors

Larry Bankston
Executive Director

Erik Piazza
President
Phelps Dunbar

Rusty Golden
Vice President
Le Jardin Development

David Guillory, PE
Treasurer
Compliance EnviroSystems

Justin Langlois
Secretary
Stirling Properties

Sebastian Alvarez
Alvarez Construction

Prescott Bailey
Southern Lifestyle Development

Scott Bardwell
Bienvenue Development

Ross D. Bruce
Dantin-Bruce Development

Trey Cloud
Jones Walker LLP

Charlie Colvin
Momentum Commercial Real Estate

Jason E. Engen
MBA, MPP
Premier GEOTECH and Testing, LLC

Ryan Engquist
Level Homes

John Fetzter
Crabapple Properties

Greg Flores
Flores Construction

Taylor Gravois
PE, PLS, PMP
CSRS, Inc.

Jamie D. Jones
Jones Hastings Co. Inc.

George Kurz
Kurz & Hebert

Laurence Lambert
PE, PTOE, PTP
VECTURA

Russell Mosely
Mosely Development

Deric J. Murphy, PE
Quality Engineering & Surveying

Trula Remson
RHH Architects

Justin Rettstatt
Entergy

Mickey Robertson
PE, PLS
MR Engineering & Surveying, LLC

Jonann Stutzman
NAI Latter & Blum

Michael Thomassie, PE
Duplantis Design Group, PC

Mike Wampold
Wampold Companies



@ HIGHLAND

Developer/Owner: 365 Labs

Contractor: MAPP, LLC

Architect/Designer: Manning Architects | Eskew+Dumez+Ripple

Landscape Architect: Joseph Furr Land Design



ARTISAN HILL

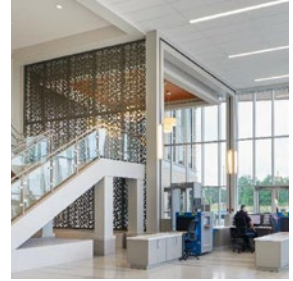
Developer/Owner: Bardwell Homes

Contractor: Bardwell Homes

Engineering: GWS

Architect/Designer: JDE Designs

Realtor: Kirkpatrick Group by Keller Williams



ASCENSION PARISH COURTHOUSE

Developer/Owner: Ascension Parish Government

Contractor: LEMOINE

Engineer: Quality Engineering & Surveying

Architect: Grace Hebert Curtis Architects

Landscape Architect: Quality Engineering & Surveying



ASCENSION PARISH FIRE STATIONS Galvez (#51), St. Amant (#61), Sorrento (#20) and Geismar (#80)

Developer/Owner: Ascension Parish Fire District No. 1

Contractor: J Reed Constructors | Blount Gen. Contractor

Engineering: Quality Engineering & Surveying

Architect/Designer: Mougeot Architecture

Landscape Architect: Quality Engineering & Surveying



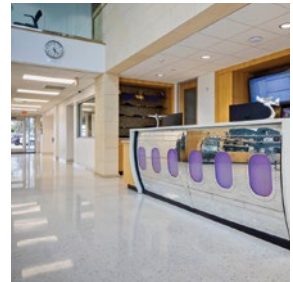
BELLACOSA

Developer/Owner: D.R. Horton, Inc. - Gulf Coast

Contractor: Kenny Lindsey Construction, LLC

Engineering: Quality Engineering and Surveying

Landscape Architect: Quality Engineering and Surveying



BTR JET CENTER

Developer/Owner: Brett Furr

Contractor: Arkel Constructors

Engineering: ADG Baton Rouge, LLC (mechanical)

Engineering: Stein Lasseigne, Inc. (structural)

Architect/Designer: DNA Workshop



CATHOLIC HIGH SCHOOL BROTHER DONNAN BERRY, S.C., STUDENT CENTER

Developer/Owner: Catholic High School

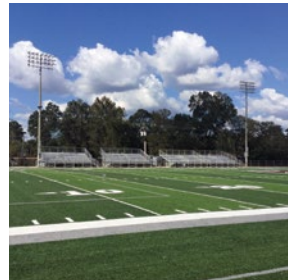
Contractor: Arkel Constructors

Engineering: CSRS, Inc.

Engineering: MEP Engineer (structural)

Architect/Designer: Ritter Maher Architects

Landscape Architect: Carbo Landscape Architecture



CENTRAL WILDCAT STADIUM

Developer/Owner: Central Community School System

Contractor: Geosurfaces, Inc.

Engineering: Quality Engineering and Surveying

Architect/Designer: Grace Hebert Curtis Architects

Landscape Architect: Quality Engineering and Surveying



CITIZENS BANK & TRUST RENOVATIONS

Developer/Owner: Citizens Bank & Trust

Contractor: Centurion Construction Management

Engineering: Southeast Engineers

Architect/Designer: Ritter Maher Architects

Other: Salas O'Brien | MEP Engineers



CITY SQUARE WEST

Developer/Owner: City Square, LLC

Contractor: Arkel Constructors

Engineering: Quality Engineering and Surveying

Architect/Designer: Jairo Leon Architects

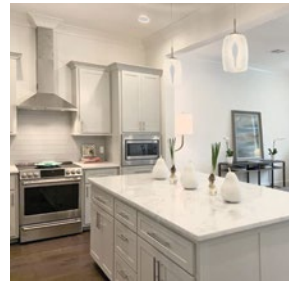
Landscape Architect: Quality Engineering and Surveying

Realtor: Momentum Commercial Real Estate



EAST BATON ROUGE COUNCIL ON AGING NEW LOCATION, "AGELESS CIRCLE"

Developer/Owner: EBR Council on Aging
Contractor: Blount General Contractors
Engineering: Marrero, Couvillion, & Associates
Architect/Designer: Coleman Partners Architects, LLC
Landscape Architect: Reich Associates, LLC



FIERO STREET TOWNHOMES

Developer/Owner: Christian Street Townhomes, LLC
Contractor: Arkel Constructors
Engineering: CSRS, Inc.
Architect/Designer: RHH Architects
Realtor: Ruthie Golden



FRANKLIN ASSOCIATES HEADQUARTERS / EXECUTIVE CONFERENCE CENTER

Developer/Owner: 250 SF, LLC

Contractor: Arkel Constructors

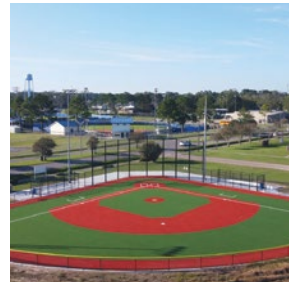
Engineering: Salas O'Brien Engineers

Architect/Designer: RHH Architects

Landscape Architect: ELS LA

Interior Designer: Ty Larkin Interiors

Other: GWS Engineering (civil)



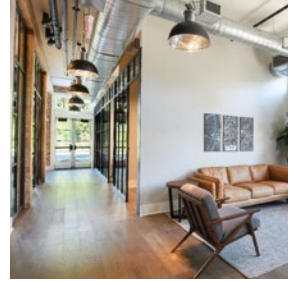
GONZALES ALL ABILITIES FIELD / TEAM OF DREAMS FIELD

Developer/Owner: Chamber / City of Gonzales

Contractor: Fields, Inc.

Engineering: Quality Engineering and Surveying

Landscape Architect: Quality Engineering and Surveying



H2BRAVO HEADQUARTERS BUILDING / MAGNOLIA RIDGE APARTMENTS

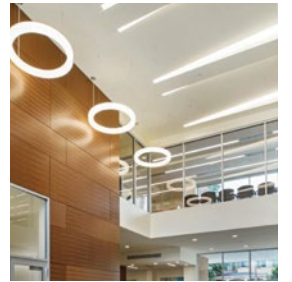
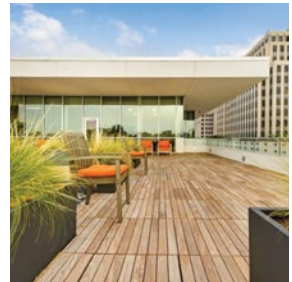
Developer/Owner: H2 Bravo/HC Herndon, LLC

Contractor: TKTMJ, Inc.

Engineer: Salas O'Brien Engineers

Architect/Designer: RHH Architects

Landscape Architect: ELS Landscape Architect



HEADQUARTERS FOR LOUISIANA STATE LICENSING BOARD FOR CONTRACTORS

Developer/Owner: State of Louisiana

Contractor: Ratcliff Construction Company

Engineering: Salas O'Brien Engineers

Architect/Designer: RHH Architects

Landscape Architect: Carbo L.A.

Designer: Lamoyne Design Associates, LLC

Other: Louisiana Land Engineering



JEFFERSON TERRACE ELEMENTARY SCHOOL

Developer/Owner: EBR Schools

Contractor: Cangelosi Ward General Contractor

Engineering: Civil Solutions Consulting Group

Architect/Designer: Grace Hebert Curtis Architects

Landscape Architect: Dana Brown & Associates

Design Consultant: DLR Group



JUBAN SQUARE

Developer/Owner: Juban Square, LLC

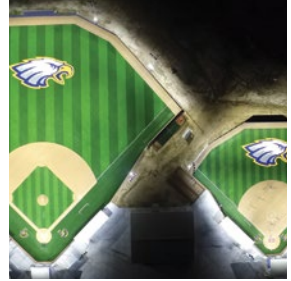
Contractor: Arkel Constructors

Engineering: Quality Engineering and Surveying

Architect/Designer: Jairo Leon Architect

Landscape Architect: Quality Engineering and Surveying

Realtor: RE/MAX First, Doug Ferris



LIVE OAK HIGH SCHOOL ATHLETIC COMPLEX

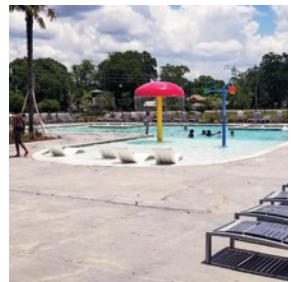
Developer/Owner: Livingston Parish Public Schools

Contractor: Blount General Contractors

Engineering: Quality Engineering and Surveying

Architect/Designer: Gasaway Gasaway Bankston Architects

Landscape Architect: Quality Engineering and Surveying



MEADOW VIEW AMENITY SITE

Developer/Owner: D.R. Horton, Inc. - Gulf Coast

Landscape Architect: Quality Engineering and Surveying



OAK LAKE SUBDIVISION

Developer/Owner: D.R. Horton, Inc. - Gulf Coast

Engineering: Quality Engineering and Surveying

Landscape Architect: Quality Engineering and Surveying



OCHSNER - THE GROVE

Developer/Owner: Ochsner Health System

Contractor: LEMOINE

Engineering: Duplantis Design

Architect/Designer: Grace Hebert Curtis Architects

Landscape Architect: Rotolo Consultants



OCHSNER MEDICAL COMPLEX - THE GROVE

Developer/Owner: Stirling Properties/Ochsner Health System

Contractor: Richard Price Contracting

Engineering: Duplantis Design Group | Stantec

Architect/Designer: Grace Hebert Curtis Architects

Landscape Architect: RCI

Realtors: Stirling Properties

Other: LEMOINE



PARCEL 21, THE COUNTRY CLUB OF LOUISIANA

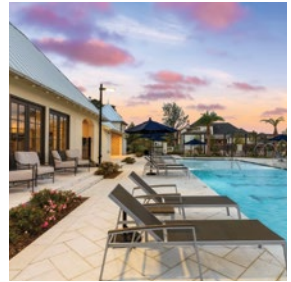
Developer/Owner: Le Jardin Development

Contractor: Le Jardin Development

Architect/Designer: Savoie Architects

Realtor: Ruthie Golden

Other: Master Plan Designer, Rob Gray, Hoerr Schaudt Landscape Architects



ROUZAN TND

Developer/Owner: John Engquist & Charles A. Landry

Contractor: Harvey Honore | G.L. Sullivan

Engineering: Duplantis Design Group | Stantec

Architect/Designer: Steve Oubre | LRK (Mike Sullivan)

Designer: The Design Studio of Louisiana

Landscape Architect: SWA | Reich & Associates

Realtors: Jennifer Waguespack, Meghan Dunne,

Sales Agent - Liz Firesheets

Others/Builders: Level Homes, Bardwell Homes, LaFosse, Cagley, Element, Manchac Homes, Bernhard Normand Construction, Normand, Scheffy Construction, & J. Watts, inc.



SAWGRASS POINT

Developer/Owner: Bearing Point Properties

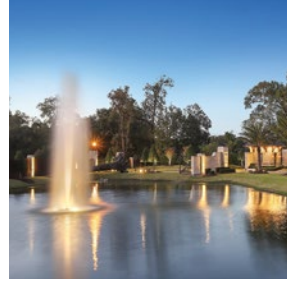
Contractor: Doster

Engineering: Sigma Engineers

Architect/Designer: Humpreys & Partners

Landscape Architect: Reich Associates

Other: Coleman Partners (Interiors)



STONEY POINT ESTATES

Developer/Owner: Stoney Point Estates, LLC

Engineering: MR Engineering & Surveying, LLC



THE MERCANTILE

Developer/Owner: Dantin Bruce Development

Contractor: Dantin Bruce Construction

Engineering: Louisiana Land Engineering

Architect/Designer: Ritter Maher Architects

Landscape Architect: McKnight Landscape Architects

Other: Kenneth Brown Design



THE PALMS AT SUNSET LAKES

Developer/Owner: CST Multifamily Real Estate Services

Contractor: Block Companies

Engineering: Benchmark Group, LLC

Architect/Designer: The Architectural Studio

Landscape Architect: Benchmark Group



THE SANCTUARY

Developer/Owner: The Sanctuary, LLC

Engineering: MR Engineering & Surveying, LLC

Landscape Architect: Bill Reich



VINTAGE PLACE

Developer/Owner: Bienvenue Development

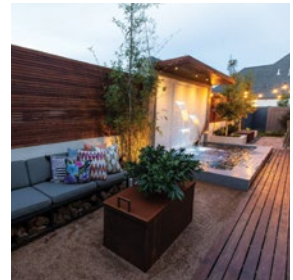
Contractor: Bardwell Homes

Engineering: Centerline

Architect/Designer: JDE Designs

Landscape Architect: McKnight

Realtor: Kirkpatrick Group by Keller Williams



WALKER RESIDENCE

Developer/Owner: Len and Becky Walker

Contractor: Level Homes

Architect/Designer: The Design Studio of Louisiana

Landscape Architect: Reich Landscape Architects

Other: Pinnacle Exterior Contractors / Southern Design and Irrigation / Plant Works



WHISPERING SPRINGS RESIDENTIAL COMMUNITY

Developer/Owner: D.R. Horton, Inc. - Gulf Coast

Contractor: Construction Site Specialties

Engineering: Quality Engineering and Surveying

Landscape Architect: Quality Engineering and Surveying



WHO WE ARE

The Growth Coalition is an organization dedicated to good growth in East Baton Rouge Parish and the Greater Baton Rouge area. Our organization was established in 1994 to ensure a level playing field for real estate professionals such as land developers, builders, land development engineers, realtors, architects and all other related fields.

FOR MORE INFORMATION CONTACT:

Jill Sylvest

office@growthcoalition.com

www.GrowthCoalition.com

Thank You to Our Sponsors

SILVER SPONSORS

Alvarez Construction
Bardwell Homes
Bearing Point Properties
Cangelosi Ward General Contractors, LLC
Citizens Bank & Trust
Commerce Title
Commercial Investment Division of the GBRAR
Compliance Envirosystems
Cook, Moore, Davenport & Associates
CSRS
Dantin Bruce Development
Duplantis Design Group, PC
Fishman Haygood
Flores Construction
Grace Hebert Curtis Architects
Gulf Coast Bank & Trust Co.
Home Bank
Kean Miller LLP
Le Jardin Development
Long Farm Development
Maestri-Murrell Real Estate
Momentum Commercial Real Estate
Phelps Dunbar LLP
Premier Geotech and Testing
Red River Bank
Ritter Maher Architects
Stirling Properties
SJB Group, LLC

MEDIA SPONSOR

GREATER BATON ROUGE
Business
Report

CENTERPIECE SPONSOR

NAILatter & Blum

Thank You to Our Sponsors

PLATINUM SPONSOR



GOLD SPONSORS

FOX: NESBIT

